



1 Darryl Fagence
IMPRESSIONS

Gold glass, black
acid etched glass

\$1,250



5 Andrew Hall
HUNCH

Automotive LPG
cylinder, steel

\$980



9 Matthew
Williams
COUNTERPOISE

Kahikatea

\$1,200



13 Jo May
**ACRYLIC ART
PANELS**

UV & water resistant
ink , perspex

Medium \$155,
Large & Extra
Large \$345



17 Kas Muller
FISH

Steel, copper

\$350



21 Jonathan
Bowman
FLAX GATE

Powder coated
aluminium

\$980

LEAF GATE

Powder coated
steel

\$1,020

**TARO SCREEN
GATE**

Powder coated
aluminium & steel

\$800



24 Pam Olver
IN FULL BLOOM

Cast glass, copper

\$12,898



28 Richard Sparke
TETRAHEDRA

Patterned steel

Small \$1,273,
Large \$1,478,
Group of 3 \$3,856



31 Wolf
Habichhorst
NIKAU GROVE

Copper aluminium,
solar light

Small \$ 1,290,
Medium \$ 1,390,
Large \$ 1,490,
\$3,800 all 3



35 Darryl Fagence
FLYING FISH

Stainless steel , glass

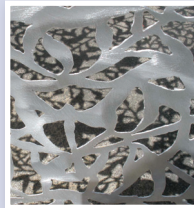
\$950 set of 3



39 Wolf
Habichhorst
ART OF FISHING

Anodised
aluminium,
silverware, glass,
copper, Australian
hardwood

\$1,800



43 Trish Clarke
**ARCHED LEAF
CANOPY**

Aluminium

\$2,300



2 Matthew
Williams
INNERSPACE

Aluminium,
macrocarpa,
paint, wax

\$1,800



6 Various Artists
**THE LETTERBOX
PROJECT**

Multi media

Prices as marked



10 Ekarasa
Doblanovic
**IMAGINE THE
LAND PROJECT-
KAIPARA RIBBON**

Adobe, NZ top soil,
sawdust, crushed
shell, ochre, pink soil.

Commission available

POA



14 Toy Murchie
TREE JEWELLERY

Takaka serpentine,
copper, steel

Necklace \$900,
Earrings \$250
each, Set \$1,200



18 Margaret
Sumich
WATERCATCHERS

Wood fired ceramic

\$330 each,
\$900 for 3



25 Neil Donaldson
SUNFLOWERS

Mild steel

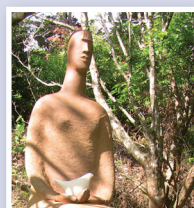
\$340



29 Trish Dickinson
**ANCIENT
NETWORKING**

Ceramic,
steel mesh,
powdercoated steel

\$1,950



32 Jin Ling
DOVE

Terracotta, Totara

\$3,950



36 John Phillips
BIRD FORMS

Fibreform

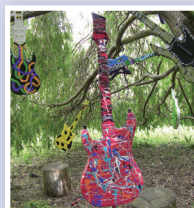
\$450



40 Neil Donaldson
DIMOND

Mild steel

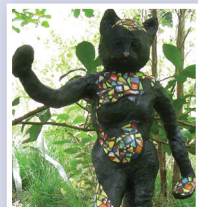
\$4,600



44 Pinehurst Junior
College
**SOUND OF
SILENCE**

Playstation 2
& Xbox guitars,
paint

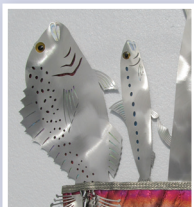
NFS



3 Julia Alabaster
DANCING CAT

Ferro cement,
mosaic tiles

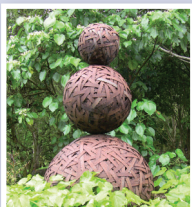
\$1,280



7 Darryl Fagence
FISH N KETE

Stainless steel, glass

\$1,250



11 David Carson
**NOT OF THIS
PLANET (2003)**

Steel saw
blades

Collection James
Wallace Arts Trust



15 Sandra Meyst
MIGRATION

Oamaru stone,
Australian hardwood

\$750 each, \$1,400
for 2



19 Barry Lett
**PINK GUIDE DOG
(2002)**

Painted bronze

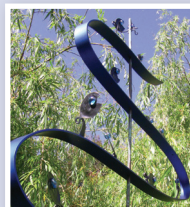
Collection James
Wallace Arts Trust



22 Jan Gosling
RIVER SONG

Oamaru stone,
galvanised steel rod

\$640 each,
\$1,900 for 3



26 Wolf
Habichhorst
ROLLERCOASTER

Anodised aluminium,
silverware, glass,
copper, Australian
hardwood

\$1,800



30 Gitta Schrade
CONCOCTION

Copper

\$870

WILD WATERS

Copper

\$650

MEADOW

Copper, silverplated
nickel-brass, glass

\$950



33 Gitta Schrade
BREAKTHROUGH

Copper, silverware,
Australian hardwood

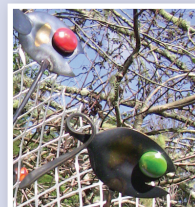
\$1,850



37 Sally Lush
FLORAL FLOW

Fabric flowers

Small \$60,
Medium \$250



41 Wolf
Habichhorst
WHIRL

Aluminium,
silverware, glass,
copper, stainless
steel, Australian
hardwood

\$1,400



45 Darryl Fagence
GINKGO

Gold glass, copper

\$1,250



4 Kas Muller
WAGON EELS

Steel, paint

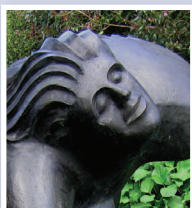
\$400



8 Vincent
Kobylarz
PILLOW LAVA

Ceramic

\$3,500



12 Llew Summers
HOPE WITH WINGS

Bronze

\$90,000



16 Jean Hodson
LOOPY LOO

Ceramic, glass tiles,
plants, soil

\$620



20 Toy Murchie
**DRAGON WITH
FORKEDLESS
TONGUE**

Steel, copper

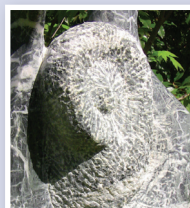
\$600



23 Anna Korver
THE RIVER

Basalt, steel

\$4,950



27 Maurice van
Cooten
RESONATOR

Italian Metamorphic
Stone, Australian
hardwood

\$3,750



34 Maxine
Parkin-Jones
ANCILLA

Ceramic, wood,
paint

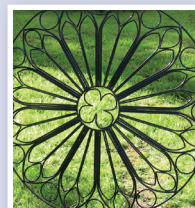
\$990



38 Gitta Schrade
FLOWER BASKET

Copper, silverware,
glass, Australian
hardwood

\$1,850



42 Rose Petterson
ROSE WINDOWS

Steel rod, epoxy
enamel or
powdercoat

\$600 each,
\$3,500 all 7



46 John Rawson
KAURIVANES

Recycled Kauri,
Oregon, stainless
steel, lead

\$1,550 each,
\$7,000 set of 5



47 Rod Davies
TOETOE IN THE WIND

Terracotta, stainless steel

\$680 set of 5



52 Clovis Viscio
TUSKED WETA

Corten steel, stainless steel, lead

\$1,250



57 Neil Donaldson
FLAT LEAF AND FLOWER

Mild steel

\$1,500



62 Wolf Habichhorst
EMBRACE

Copper, aluminium, solar light

\$2,700



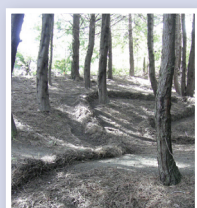
4 Peter Lange
BOLLARDS

Bricks, tiles, epoxy, polystyrene

\$6,000 each

1481 Kaipara Coast Highway,
PO Box 63, Kaukapakapa 0843
(located at Kaipara Coast Plant Centre
4km north of Kaukapakapa on SH 16)
Phone 09 420 5655 / Fax 09 420 5654
Email: sculpture@kaiparacoast.co.nz

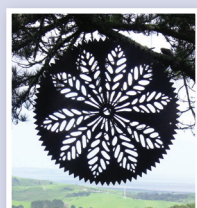
Copyright belongs to Kaipara Coast Sculpture Gardens and the individual artists.
Catalogue Design: Joanne Lottering, Design Impact
Thank you to all the artists who have so generously supported Kaipara Coast Sculpture Gardens, we appreciate your support and marvel at your creative ideas.
www.sculpturegardens.co.nz



48 Gaye Jurisich
INTERVENTION

Found site materials

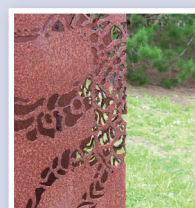
NFS



53 Nic Moon -
Courtesy Whitespace
REGENERATION -PUKA

Plasma cut used circular saw blade

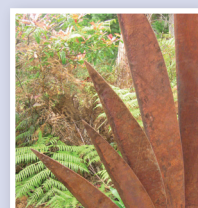
\$5,000



58 Raynor Dunn
CEPHALOPOD

Plasma cut mild steel

\$850



63 Neil Donaldson
LEAF

Mild steel

\$1,350



5 Helen Pollock
A SOUTHERN CROSSING

Terracotta

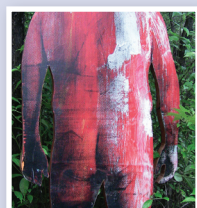
\$6,000



49 Gaye Jurisich
NECKPIECE

Found site materials

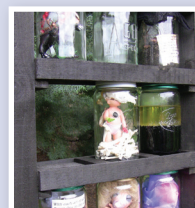
NFS



54 Christian Nicolson
BAREBOTTOMLAND

Screen print, laminated macrocarpa

\$1700 each



59 Various Artists
DARK SOULS OF WOMEN

Glass Agee jars, wood, mixed media

NFS



1 Christian Nicolson
SHOT DOWN

Solid macrocarpa, concrete and steel footings

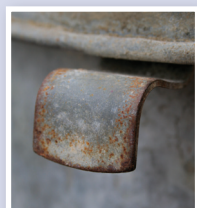
\$22,000



6 Peter Lange
RIBBON SEAT

(Distressed) Brick, reinforcing steel, epoxy mortar

\$4,500



50 T.R. Ash
LISTEN

Galvanised steel

NFS



55 Greg Taylor
XYLOTUBES

Totara fenceposts, steel tube, enamel

\$1,850



60 Matthew Williams
EQUILIBRIUM

Oak, aluminium

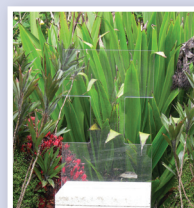
\$3,500



2 Alex Stone
FORM 1

Wood, hemp rope, rocks, hide, leather

\$15,000



7 Gill Gatfield
BABEL

Cut toughened float glass, concrete block (Maquette, ed. 3)

\$8,600



9 Rose Petterson
SANCTUARY, WATCHTOWER LOOKOUT, THE HIDDEN WAY

Steel rod, epoxy enamel

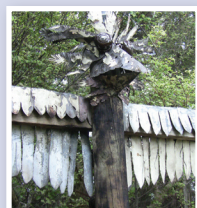
\$4,500 each



51 Knitcetera
OUT THERE

Wool, acrylic, fibres, steel, wood

NFS



56 Marianda Twydell
HIGH VOLTAGE PHOENIX

Recycled materials, steel, wood

\$900



61 Ray Haydon
VEER

Cedar

\$28,500



3 Jonathan Bowman
NO LOOKING BACK

Galvanised steel, photographic image, recycled bicycle

\$3,600



8 John Philips
WAKA

Fibreclay

\$990



10 Phil Bonham
NORFOLK HORN

Norfolk pine

\$22,000

Welcome to Kaipara Coast Sculpture Gardens

Kaipara Coast Sculpture Gardens is a unique sculpture trail set in a tranquil, rural, garden oasis. The combined vision and grit of landowners David & Geraldine Bayly, curator Sally Lush and artists has resulted in an inspiring contemporary art treat for locals and visitors.

Against the backdrop of the Kaipara harbour, the one kilometre trail winds through a secluded valley containing a slice of almost every type of iconic New Zealand landscape: mown lawns, fruit tree orchard, grassy slopes, regenerating bush, old farm fences, pine forest, potagers, and ponds.

Kaipara Coast Sculpture Gardens brings to life the vision of Kaukapakapa local, David Bayly, who twenty four years ago learnt to propagate plants on a piece of his father's land. David bought part of the family farm, and then set up a specialist plant nursery and Garden Centre, building a reputation for quality plants and service. In 2008 Kaipara Coast Plant Centre became the best Garden Centre in the North Island as part of the Yates Garden Centre of the Year Award.

Exhibition 2012, the fourth exhibition at Kaipara Coast Sculpture Gardens features sculpture in wood, steel, stone, glass, ceramic, and installation works that have been selected and developed for each context to make mini-galleries within the valley. Works are revealed as the path twists and turns, revealing vistas from vantage points where picnic spots and seating invite visitors to rest and contemplate the art and gardens.

Exhibition 2012 will run until October 2012 enabling visitors to have a fresh experience of the artworks and gardens as the seasons change.

About the trail

The Sculpture Trail at Kaipara Coast Sculpture Gardens is an easy 1km walk on gravel paths which are accessible for mountain buggies but not wheelchairs or walking frames.

Allow 1 to 1 1/2 hours to enjoy the walk fully and take in all the sculptures. The Trail is open daily from 9am to 5pm with last entry at 4pm.

There are many seats along the path to allow for resting and contemplating the views and sculptures.

The sculptors have spent many hours of "Blood, sweat and tears" to create these sculptures, please respect this by not touching or climbing on the artworks (except where indicated by a sign).

No dogs (Except Guide Dogs).

Adults, to keep your children safe please supervise them around the sculptures and ponds. Any damages incurred will need to be paid for.

To enhance your viewing experience please follow the gravel pathway in numerical order as the trail has been designed to optimise the views of each sculpture. Also, remember to visit the ten sculpture sites on our entry and exit driveways.

Please respect the environment by not removing any plant material. Please take any rubbish with you. Due to the fire risk, Please No Smoking.

Sales

To purchase the sculptures make a note of the catalogue details and proceed to the retail counter at the start / finish of the Sculpture Trail. You can purchase using cash, cheque, Eftpos, Visa, MasterCard or Amex. Prices include GST.

We are happy to assist with freight and installation when required. Delivery and installation costs where appropriate are detailed on the display panels at each sculpture. Sally Lush, the curator can be contacted on 027 260 9486 or Plant Centre staff can further advise on details relating to specific sculptures.

While all care has been taken to ensure your safety, you enter the premises at your own risk and Kaipara Coast Sculpture Gardens accept no liability for injury to yourself or the loss or damage to your property.

You also accept that you will pay for any damage incurred by you or members of your party to the sculptures.

By entering the property you agree to these conditions.

Exhibition curated by Sally Lush

Photo Cover Image: *Ginkgo* by Darryl Fagence

Catalogue photos: Sally Lush



Kaipara COAST
sculpture gardens