

www.kaiparacoast.co.nz

1481 Kaipara Coast Highway, PO Box 63, Kaukapakapa 0843
(Located at Kaipara Coast Plant Centre, 4km north of Kaukapakapa on SH 16)

Phone 09 420 5655 | Email sculpture@kaiparacoast.co.nz

KaiparaCOAST
landscape architecture

Geraldine Bayly p 09 420 3434 m 021 475 222
e geraldine@kaiparacoast.co.nz
PO Box 63 Kaukapakapa Auckland 0843

Exhibition curated by Sally Lush

Catalogue photos: Sally Lush & Ailwyn Allen
Copyright belongs to Kaipara Coast Sculpture Gardens and the individual artists.

Catalogue Design: Ashleigh Meyer, Design Impact

Thank you to all the artists who have so generously supported Kaipara Coast Sculpture Gardens, we appreciate your support and marvel at your creative ideas.

Welcome to Kaipara Coast Sculpture Gardens

Kaipara Coast Sculpture Gardens is a unique sculpture trail set in a tranquil, rural, garden oasis. The combined vision and grit of landowners David & Geraldine Bayly, curator Sally Lush and artists has resulted in an inspiring contemporary art treat for locals and visitors.

Against the backdrop of the Kaipara harbour, the one kilometre trail winds through a secluded valley containing a slice of almost every type of iconic New Zealand landscape: mown lawns, fruit tree orchard, grassy slopes, regenerating bush, old farm fences, pine forest, potagers, and ponds. Kaipara Coast Sculpture Gardens brings to life the vision of Kaukapakapa local, David Bayly, who in 1988 learnt to propagate plants on a piece of his father's land.

David bought part of the family farm, and then set up a specialist plant nursery and Garden Centre, building a reputation for quality plants and service. Exhibition 2018, the tenth exhibition at Kaipara Coast Sculpture Gardens features sculpture in wood, metal, stone, glass, fibre, ceramic and installation works that have been selected and developed for each context to make mini-galleries within the valley.

Works are revealed as the path twists and turns, revealing vistas from vantage points where picnic spots and seating invite visitors to rest and contemplate the art and gardens. Exhibition 2018 will run until October 2018 enabling visitors to have a fresh experience of the artworks and gardens as the seasons change.

About the trail

The Sculpture Trail at Kaipara Coast Sculpture Gardens is an easy 1km walk on gravel paths which are accessible for mountain buggies but not wheelchairs or walking frames.

Allow 1 to 1 1/2 hours to enjoy the walk fully and take in all the sculptures. Don's Conservation Track, an addition to the trail, has been carved using traditional tools of a shovel, wheelbarrow and rake by David and his father Don Bayly. This track takes you on a winding journey through native forest, along streams and waterfalls and focuses on a conservation message. The track takes around 30mins to walk, with a reasonable level of fitness recommended and is not suitable for pushchairs.

The Trail is open daily from 9am to 5pm with last entry at 4pm. There are many seats along the path to allow for resting and contemplating the views and sculptures. The sculptors have spent many hours of "Blood, sweat and tears" to create these sculptures, please respect the art by not touching or climbing.

No dogs (Except Guide Dogs).

Adults, to keep your children safe please supervise them around the sculptures and ponds as any damages will need to be paid for. To enhance your viewing experience please follow the gravel pathway in numerical order as the trail has been designed to optimise the views of each sculpture. Also, remember to visit the 4 sculpture sites on our entry and exit driveways.

Please respect the environment by not removing any plant material, taking rubbish with you and due to the fire risk, please No Smoking.

Sales

Sculpture sales at the retail counter.

Prices include GST.

Delivery and installation costs are available from retail. Contact Sally Lush, the curator, 027 260 9486 or Kaipara Coast staff for further details relating to specific sculptures.

While all care has been taken to ensure your safety, you enter the premises at your own risk and Kaipara Coast Sculpture Gardens accept no liability for injury to yourself or the loss or damage to your property.

You also accept that you will pay for any damage incurred by you or members of your party to the sculptures and by entering you agree to these conditions.

KaiparaCOAST
sculpture gardens

Exhibition 2018

Exhibition 2018



1 Jeff Thomson
SHRED
Shredded paper, wire
NFS

Curators Pick 2017



6 Faith Tavener
REALITY SQUARED
Black acrylic, stainless steel rings
\$450



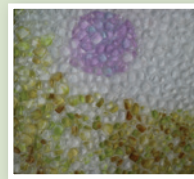
11 Community project
facilitated by Art Centre Helensville and Kaipara Coast
MAKE YOUR MARK
Fabric, acrylic paint
NFS



16 Cherrie James
BIRD POLES
Recycled pottery, glue
\$39 each



21 Faith Tavener
REALITY SQUARED
Black acrylic, stainless steel rings
\$450



26 Vivienne Thomson
NOWHERE TO HIDE
Glass, wood
\$575



31 Gaye Jurisich
THE ADHERENT TRIO
20mm Mild Steel
\$ 5,600 each or \$15,000 all 3



36 Gaye Jurisich
SNIFTER
Plastic offcut ribbon
POA
 Curators Pick 2011



41 Darryl Fagence
PERSPECTIVE
Glass
\$1,300 (7-piece work) or \$1,600 (13-piece work)



46 Katherine Batchelor
KEEPER
Crocheted meat string, shellac, found objects
\$1,200



2 Trish Campbell
ALPHA, BETA GAMMA
HI Impact UV rated opal acrylic, IP Rated Led lights, Super gel, IP68 Power supply
\$3,899 (Outdoor)\$2,399 (Indoor) per light , \$21,500 entire installation of 6



7 David Carson
POT (2002)
Black acrylic, stainless steel rings
NFS (On loan from Collection James Wallace Arts Trust)



12 Nicholas Mans
PLAYPILL
Fibreglass, steel
\$4,800



17 Boud van den Bemd
THE FLAMING FEATHERS
Wood, acrylic paint
\$295 each



22 Marlyne Jackson
A PLACE TO DREAM
Mixed Media, glass, brass, stainless steel mesh, carbon washers, fabric flowers, polystyrene balls
Flowers \$60, Singles \$250 Baskets \$350, Brass Arms Medium \$550, Brass Arms Large \$650, Copperbottoms (on ground) \$650



27 Peter Lange
BRICK WIGGLE SEAT
Brick, steel
NFS
 Curators Pick 2009



32 Darryl Fagence
GODWIT
Glass
\$1,200



37 Faith Tavener
REALITY SQUARED
Black acrylic, stainless steel rings
\$450



42 Aaron Frater
STEP UP - STEP DOWN
Barrier mesh, cable ties, wire, nylon
\$450 each



47 Blair Fraser
CROSS THAT LINE
Ceramic
\$350



3 Fiona Henderson
HANGING BY A THREAT
Ceramic, plastic coated wire, plastic cable ties, copper wire, electrical tape
\$650



8 Janette Cervin
HYDRANGEAS
Acrylic and resin on aluminium
\$4,800 each
 Curators Pick 2016



13 Ian Fewtrell
Rustic Twist SHEEP
Corrugated iron
Ram \$895
Ewe \$630
Lamb \$420
Sheep Dog \$855



18 Aaron McConchie
NO ANSWER
Galvanised steel
\$3,370



23 Jeff Thomson
HOUSE (2014)
Screen printed steel
NFS



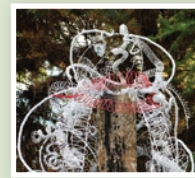
28 Jenny McLeod
WATER BOWLS
Fused glass
Small \$90 each
Medium \$110 each
Large \$130 each



33 Bruce Hubbard
DREAMING OF 23
River stones, wood, canvas, corten steel, stain
\$2,000



38 Ramon Robertson
THE WEATHERMEN
Treated pine, concrete, mixed media
\$2,700
 Curators Pick 2013



43 Bev Goodwin
CEREMONIAL CLOAK
Powder coated wire
\$3,500



48 Simon Gray
ALCORNOCALLES/ALCOSITE FOOTERS
Plywood, glass lens, timber, adhesive, sealer, perspex, cork
\$ 6,371



4 Sonja van Kerkhoff
TE MAHARATANGA/ THE RECOLLECTION
Printed text on dubond, acrylic, oil (2017). (Limited edition print of 38)
\$550 small, \$680 Large



9 Kay Satherley
OUTDOOR ART PANELS
UV resistant Inks, aluminium, acrylic composite board, gloss lamination
Small \$130, Medium \$215, Large \$245 each



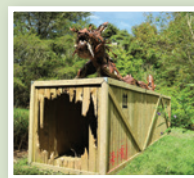
14 Faith Tavener
FRACTURED REALITY
Black acrylic, stainless steel rings, stainless steel pole, chain
\$2,200
 Curators Pick 2014



19 Hannah Kidd
THE SKY IS FALLING (2008)
Steel rod, corrugated iron
NFS (On loan from Collection James Wallace Arts Trust)



24 Jan Simmons
EARTHLY JEWELS
Clay, glaze, glass, wool, wire
\$35 Small, \$45 Medium, \$75 Large & hanging
\$2,500 Complete Installation



29 Andrew Algie
TANIWhA - SEA DRAGON
2mm sheet steel, Pohutukawa driftwood, Kauri gum, glazed pottery, varnish
POA



34 John Mulholland
THE STANDING ROOM
1 Totara, steel / 2 Treated pine, glass, waterborne stain /3 Macrocarpa, glass, waterborne paint
\$ 3,250 (all 3) , Part 1 \$950 Part 2 \$750, Part 3 \$1,550)



39 Darryl Fagence
KERADAS, KING OF KAIPARA
Glass
\$575



44 Trish Clarke
OUTDOOR WALLPAPER
Plasma cut aluminium
\$1,200
 Curators Pick 2010



2 Gill Gatfield
BABEL AND POSTSCRIPT
Babel Cut toughened float glass, concrete block (Maquette, ed. 3), Postscript Barbwire
Babel POA
Postscript \$800



3 Jane & Mario Downes
INSECT GRASSES
Mild steel
Monarch & Caterpillar \$2,000
Dragonfly \$1,850
Monarch & Caterpillar (short) \$2,000
Dragonfly (short) \$1,850
Ladybird (short) \$1,750



4 Jane & Mario Downes
TARAXACUM FOREST
Mild and galvanised steel
\$3,000 - \$5,000 each as marked



5 The Paper Mill
NEST
Flax, twigs, paper, paper clay
POA



10 Faith Tavener
REALITY SQUARED
Black acrylic, stainless steel rings
\$450



15 Jin Ling
DOVE
Ceramic, totara
\$3,800
 Curators Pick 2012



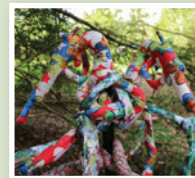
20 Doug Kennedy
BIRD OF PARADISE
Steel
\$56,350



25 Margaret Johnston
COLONIAL VICTORIANA
Frost cloth
\$100 each



30 Rebecca Rose
RAINBOW RIPPLE DELIGHT
Stainless steel 316
\$7,000



35 Audrey Boyle
FLOWERPOWER
Dress fabric, Dacron, catenary wire, fence posts
\$10,000
 Curators Pick 2015



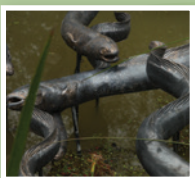
40 Jeff Thomson and Reg Laurie
COILS
Number 8 wire
\$2,500



45 Karl Chilcott
GOLDEN AGE TREE
Poplar, acrylic paint, water based varnish
\$20,000



1 Greg Piper
PIWAKAWAKA TOY
Automotive painted fibreglass, painted steel, stainless steel, rope
\$3,000



2 Samuel Ludden
TUNA
Ceramic, steel
Large \$495
Medium \$390
Small \$295



3 Zoe Nash
FINDING HOME
Sourced and found mixed media
\$3,950

Exhibition 2018 is a milestone one, celebrating 10 years of exhibiting sculpture from contemporary New Zealand and overseas sculptors.

This unique Sculpture Trail set in a tranquil, rural garden oasis has now been open for 10 years, exhibiting ten completely different sculpture shows annually over that time.

As a celebration of 10 years of curating this event, curator Sally Lush has selected 1 work from each year that has resonated particularly with her and asked the artist to recreate that work or create another work that evokes a similar feeling, creating a mini show of "Curators Picks".

Sally Lush says "It has been amazing to have the support of so many artists over the ten years and to be able to support, nurture and encourage artists to explore their creative endeavours free from commercial constraints. Artists have continually challenged, developed and expanded their art practices and it has been rewarding to see this development. It is wonderful to see these works that have particularly resonated with me back in the gardens like old friends."

Artists featured in the "Curators Picks" are Peter Lange (2009), Trish Clarke (2010), Gaye Jurisich (2011), Jin Ling (2012), Ramon Robertson (2013), Faith Tavener (2014), Audrey Boyle (2015), Janette Cervin (2016) and Jeff Thomson for (2017). **KEY:** Curators Pick =

The works selected for the main EXHIBITION 2018 reflect and explore themes of natural beauty, flora and fauna, environmental threats, colonisation and socio-political issues relating to the Kaipara area and where we sit in the global arena.

DRIVEWAY



1 John Mulholland
UNDER KAIPARA SKIES
Steel plate, automotive paint
\$18,000